

Anti-NPY5R Antibody
Rabbit polyclonal antibody to NPY5R
Catalog # AP61533**Specification**

Anti-NPY5R Antibody - Product Information

Application	WB, IF/IC, IHC
Primary Accession	Q15761
Reactivity	Human
Host	Rabbit
Clonality	Polyclonal
Calculated MW	50727

Anti-NPY5R Antibody - Additional Information**Gene ID** 4889**Other Names**

NPYR5; Neuropeptide Y receptor type 5; NPY5-R; NPY-Y5 receptor; NPYR5-R; Y5 receptor

Target/Specificity

Recognizes endogenous levels of NPY5R protein.

Dilution

WB~~WB (1/500 - 1/1000), IH (1/100 - 1/200), IF/IC (1/100 - 1/500)

IF/IC~~N/A

IHC~~1:100~500

Format

Liquid in 0.42% Potassium phosphate, 0.87% Sodium chloride, pH 7.3, 30% glycerol, and 0.09% (W/V) sodium azide.

Storage

Store at -20 °C. Stable for 12 months from date of receipt

Anti-NPY5R Antibody - Protein Information**Name** NPY5R**Synonyms** NPYR5**Function**

Receptor for neuropeptide Y and peptide YY. The activity of this receptor is mediated by G proteins that inhibit adenylate cyclase activity. Seems to be associated with food intake. Could be involved in feeding disorders.

Cellular Location

Cell membrane; Multi-pass membrane protein.

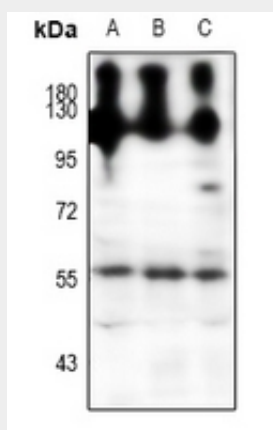
Tissue Location

Brain; hypothalamus.

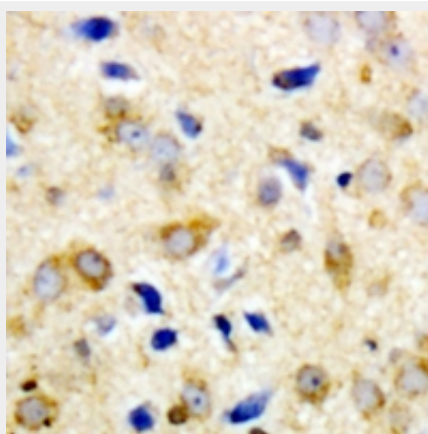
Anti-NPY5R Antibody - Protocols

Provided below are standard protocols that you may find useful for product applications.

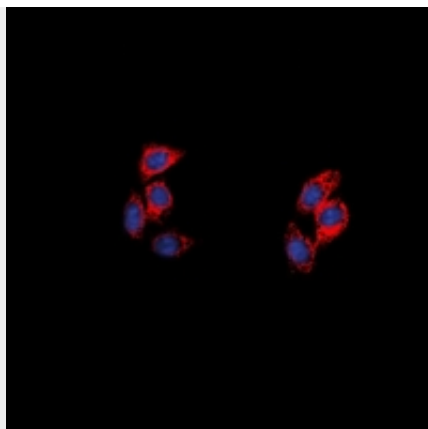
- [Western Blot](#)
- [Blocking Peptides](#)
- [Dot Blot](#)
- [Immunohistochemistry](#)
- [Immunofluorescence](#)
- [Immunoprecipitation](#)
- [Flow Cytometry](#)
- [Cell Culture](#)

Anti-NPY5R Antibody - Images

Western blot analysis of NPY5R expression in HEK293T (A), MCF7 (B), HeLa (C) whole cell lysates.



Immunohistochemical analysis of NPY5R staining in human brain formalin fixed paraffin embedded tissue section. The section was pre-treated using heat mediated antigen retrieval with sodium citrate buffer (pH 6.0). The section was then incubated with the antibody at room temperature and detected using an HRP conjugated compact polymer system. DAB was used as the chromogen. The section was then counterstained with haematoxylin and mounted with DPX.



Immunofluorescent analysis of NPY5R staining in A549 cells. Formalin-fixed cells were permeabilized with 0.1% Triton X-100 in TBS for 5-10 minutes and blocked with 3% BSA-PBS for 30 minutes at room temperature. Cells were probed with the primary antibody in 3% BSA-PBS and incubated overnight at 4 °C in a humidified chamber. Cells were washed with PBST and incubated with a DyLight 594-conjugated secondary antibody (red) in PBS at room temperature in the dark. DAPI was used to stain the cell nuclei (blue).

Anti-NPY5R Antibody - Background

KLH-conjugated synthetic peptide encompassing a sequence within the center region of human NPY5R. The exact sequence is proprietary.